

STRAFORD MA



A STEEL-CABLE NET



SUPPORTS A PROTECTIVE CANOPY



AND A VIRTUAL ROOF OF LIGHTS

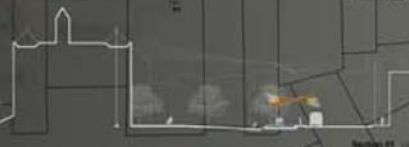
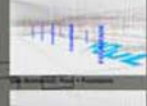
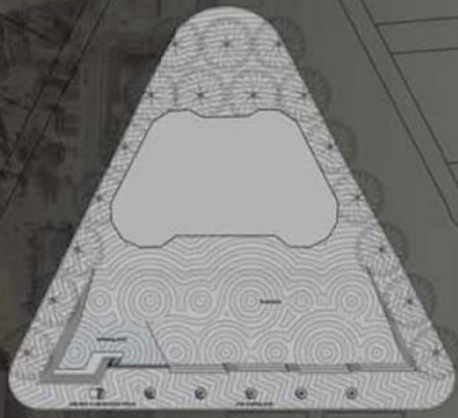
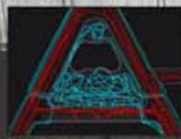
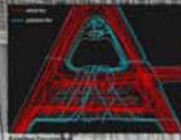


AND A STREAM OF CASCADING WATER UNDERNEATH

Place
Market Square is destined for pedestrian-oriented occupation. With the rising infrastructural demands, a paved surface that accommodates for multiple uses and sensory activities, a flat strip with a protective canopy, water features including fountains and cascading rivers, restrooms and emergency-response facilities. The canopy is a permanent architectural element that is designed by a temporary structure that is deployed above the square to form a virtual roof.

Light
The steel net holding the canopy also supports an array of fiber-optic cables. It is designed, using an auxiliary fiber-optic, to light the square to a variety of programmatic purposes. Flexible lighting scenarios include the narrative work-based programming and sensor-triggered nighttime suspension.

Sound
By means of embedded handrails, the steel canopy performs like an architectural instrument. It absorbs the sound of the cascading water in proportion to the ambient city noise.



Section 01

MARKET SQUARE

