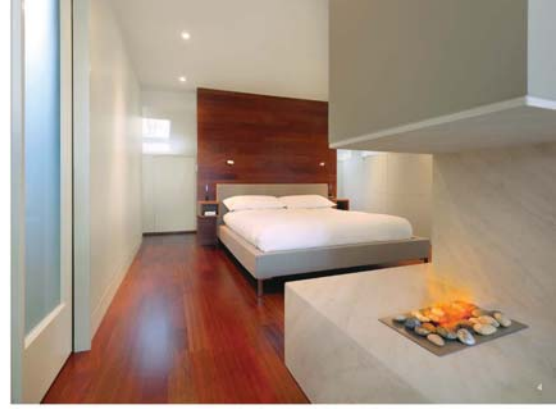


An operable skylight over the open-riser stair creates passive natural ventilation, facilitating the movement of air through the house. Natural light is also drawn into the lower floor levels, reducing the need for both artificial lighting and air conditioning.

1. LONGITUDINAL SECTION 2. FRONT ELEVATION 3. REAR ELEVATION 4. MASTER BEDROOM 5. ENSUITE BATHROOM 6. ENTERTAINMENT ROOM 7. BATHROOM

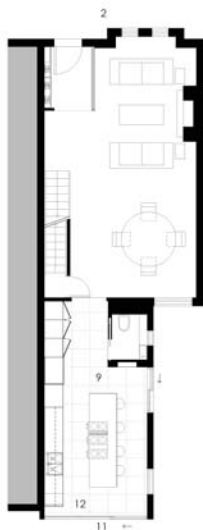


CABBAGETOWN RESIDENCE





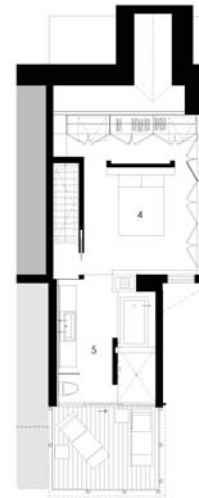
8_LIBRARY 9_KITCHEN 10_VIEW FROM ALLEY 11_KITCHEN FROM EXTERIOR 12_KITCHEN DETAIL



GROUND FLOOR



SECOND FLOOR



THIRD FLOOR