

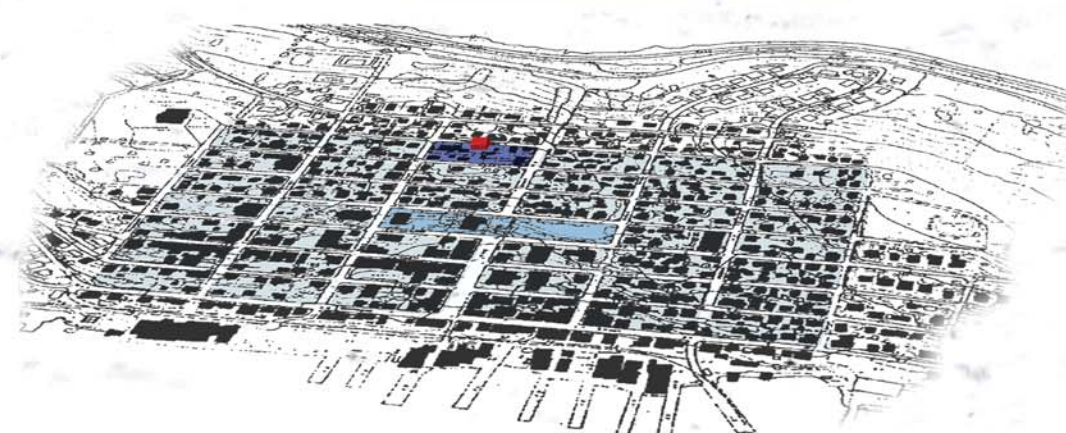


Cross|Passage House

110 Lawrence Street
LUNEBURG, NS

completed: 2009

Architect: Alec Brown NSAA
Structural Engineer: Andrea Doncaster, P.Eng.
Builder: D. Risser Construction Ltd, Lunenburg

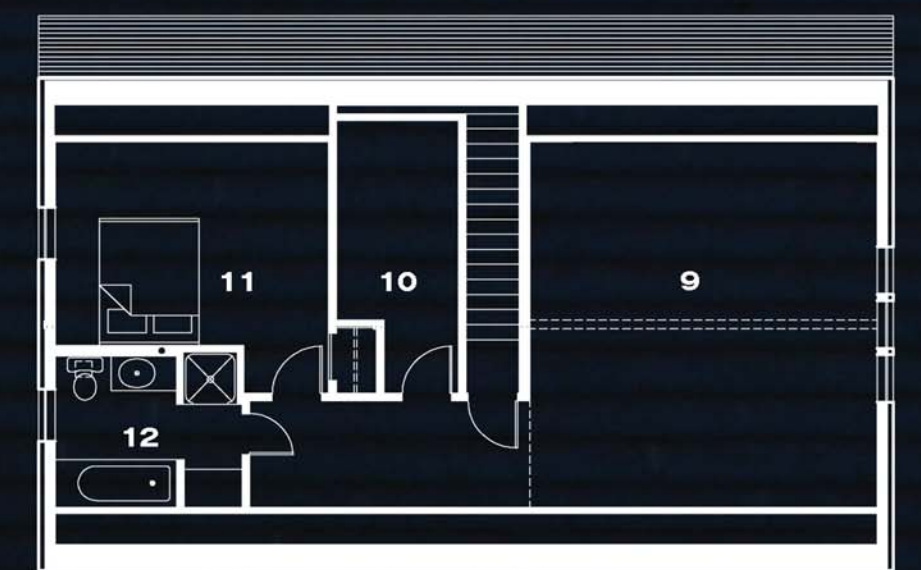
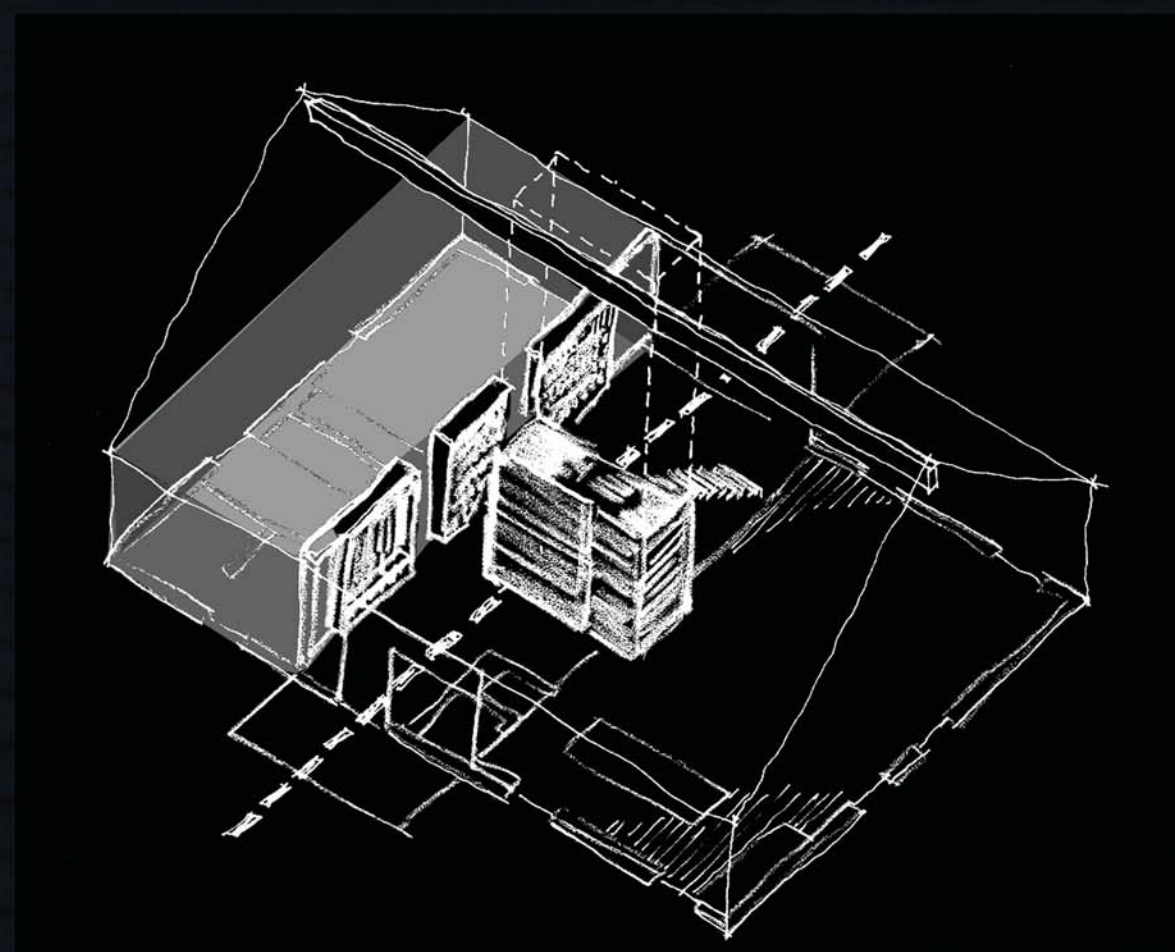




- LEGEND:
- Hall 1
 - Library 2
 - Kitchen 3
 - Living / Dining 4
 - M. Bedroom 5
 - wc 6
 - Laundry 7
 - Utility 8
 - Studio 9
 - Storage 10
 - Bedroom 11
 - wc 12

Cross|Passage House

LUNENBURG, NOVA SCOTIA
Alec Brown ARCHITECT



SECOND FLOOR



GROUND FLOOR



EAST ELEVATION



SOUTH ELEVATION